

Medical Referral Services

Mission Statement



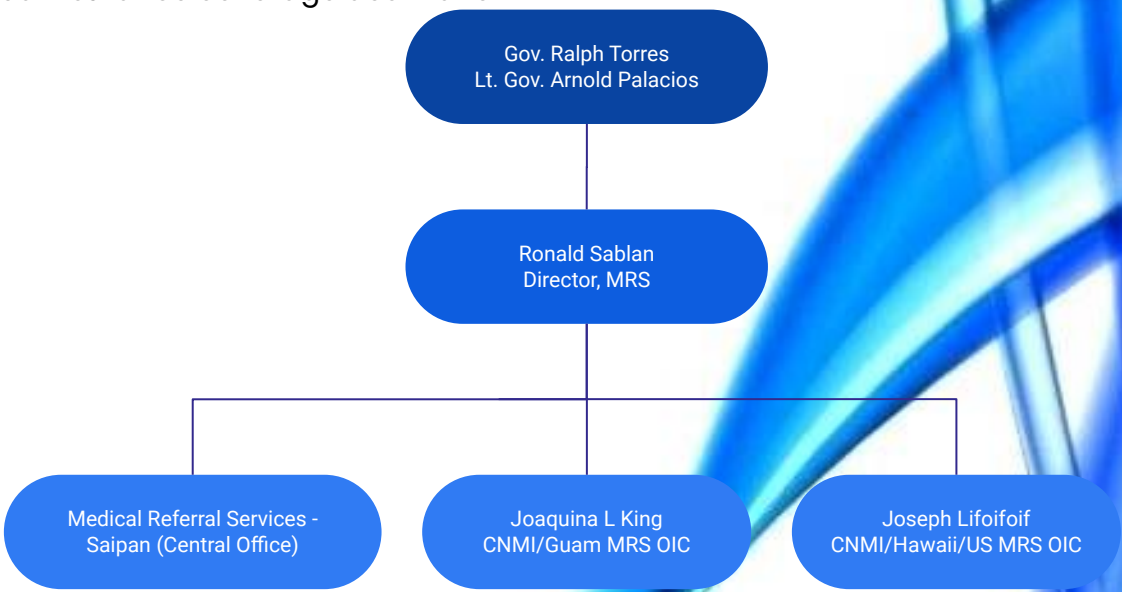
Type of Service of Program: To establish, facilitate and regulate approved medical referrals of CNMI patients to a recognized referral health care facility outside the CNMI for their extended medical care.

Purpose of Program: Medical Referral Services are designed to provide residents of the CNMI with the means of receiving medical and treatment specialty care, which is not available within the Commonwealth.

Under the Office of the Governor, are designed to provide residents of the CNMI with the means of receiving medical care and treatment for conditions which are Life Threatening and not readily available within the Commonwealth. By sending patients approved for medical referral to established referral health care facilities for extended medical care, specialties and procedures attainable for enhanced patient health.

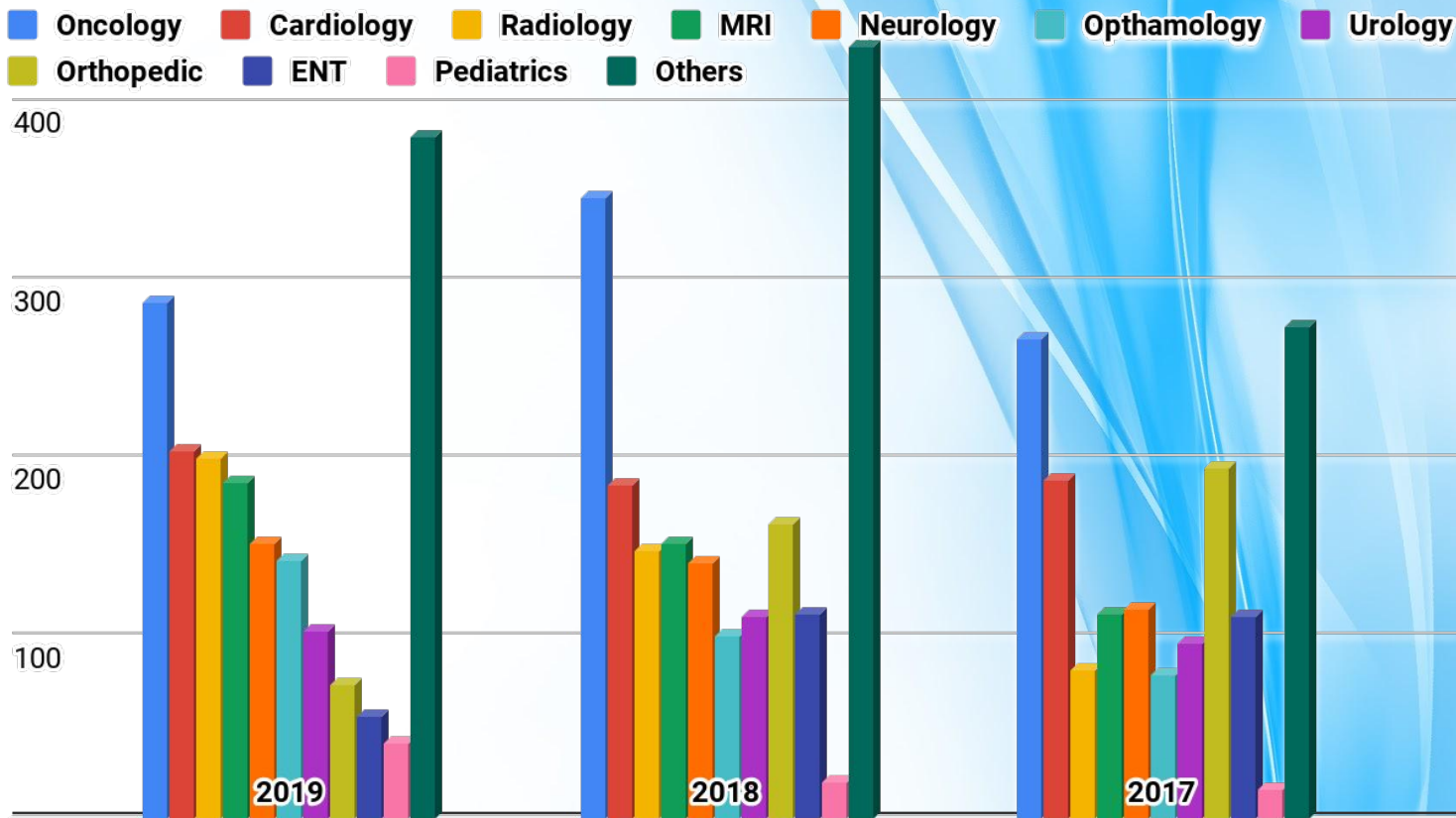
History of Medical Referral Program, PL 16-51 transferred the Medical Referral Program from the Department of Public Health to the Commonwealth Health Corporation. Executive Order No. 2013-09 (effective May 02, 2013) transferred the Medical Referral Program from the Commonwealth Health Corporation to the Office of the Governor. See 35 Com. Reg. 33542. Section 1.1 of the 2013 amended regulations (codified at Section 75-50-005) specified that these new regulations were to be codified at subchapter 140-10.7. However, because this office is now under the supervision of the Governor, the Commission has moved these regulations to Chapter 75-50.

Patients are sent off Island for their medical care primary to Guam, Hawaii, United States, and Philippines. In 2017 MRS made an effort to expand better and more efficient medical treatment to Korea and Taiwan based on each diagnose. Also depending on their Insurance coverage, patients are sent to their approved Insurance coverage destination.



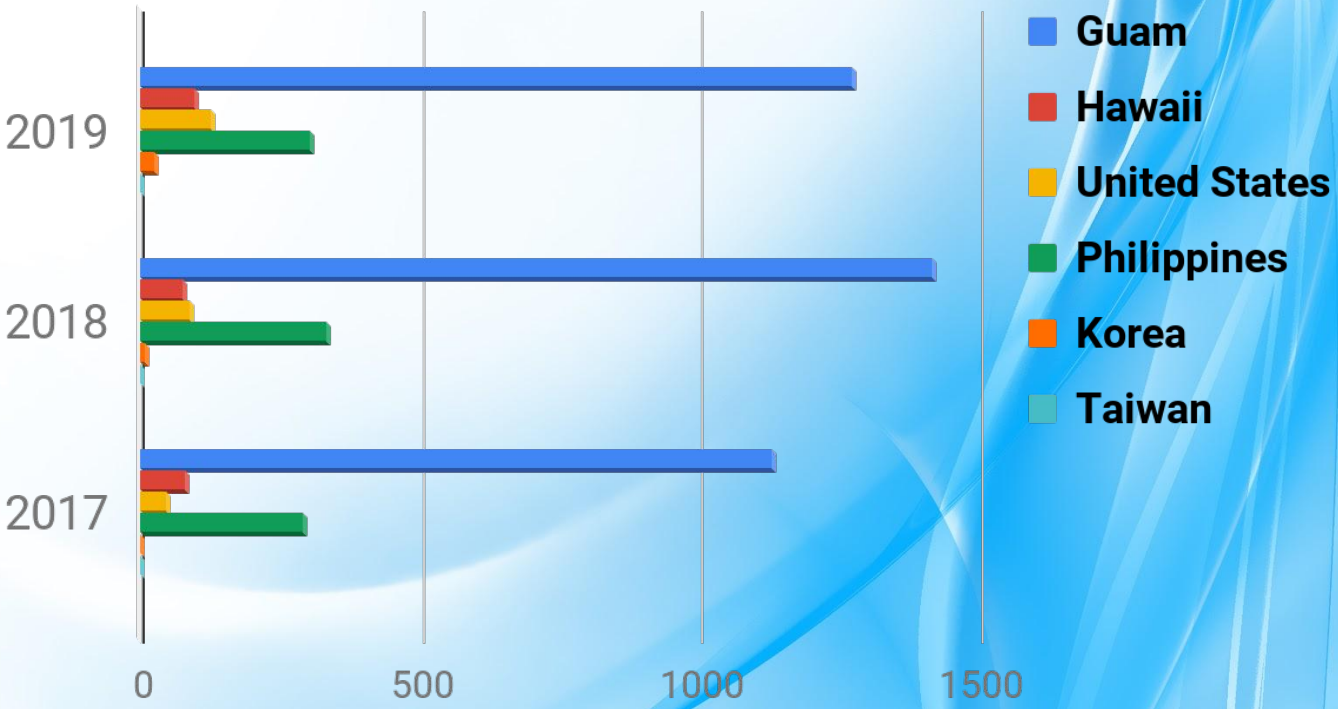
As show on [Table 1.1](#), primary reason for medical referral for off island based on patient diagnose are care related to Oncology, Cardiology, radiology, MRI and Neurology, due to the lack of medical specialists available within the Commonwealth.

2019, 2018 and 2017



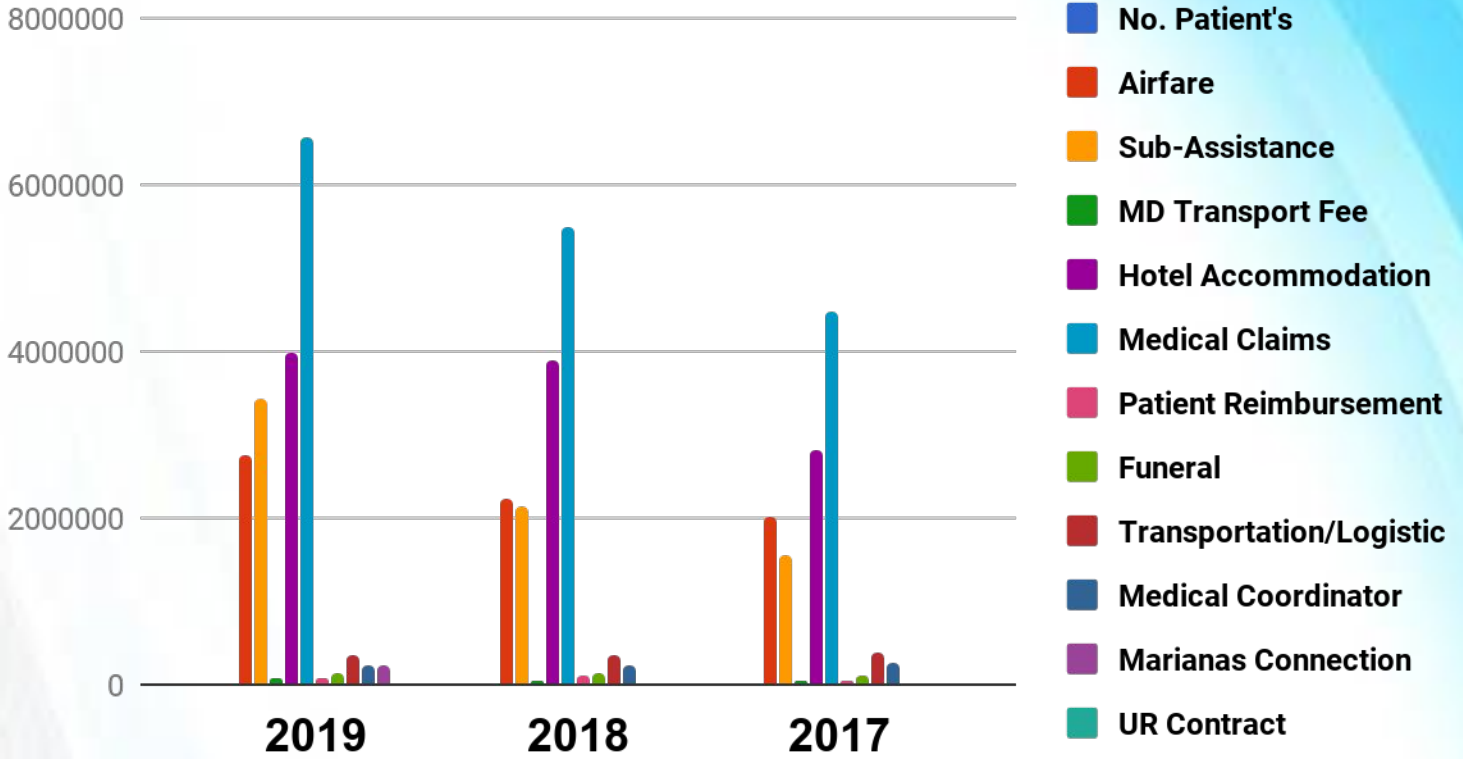
As show on [Table 1.2](#), Number of Medical Referral Patients by Are/Location from FY 2017-2019. Shows an number of medical referral patients sent off Island for medical treatment not readily available within the Commonwealth

2019, 2018 and 2017

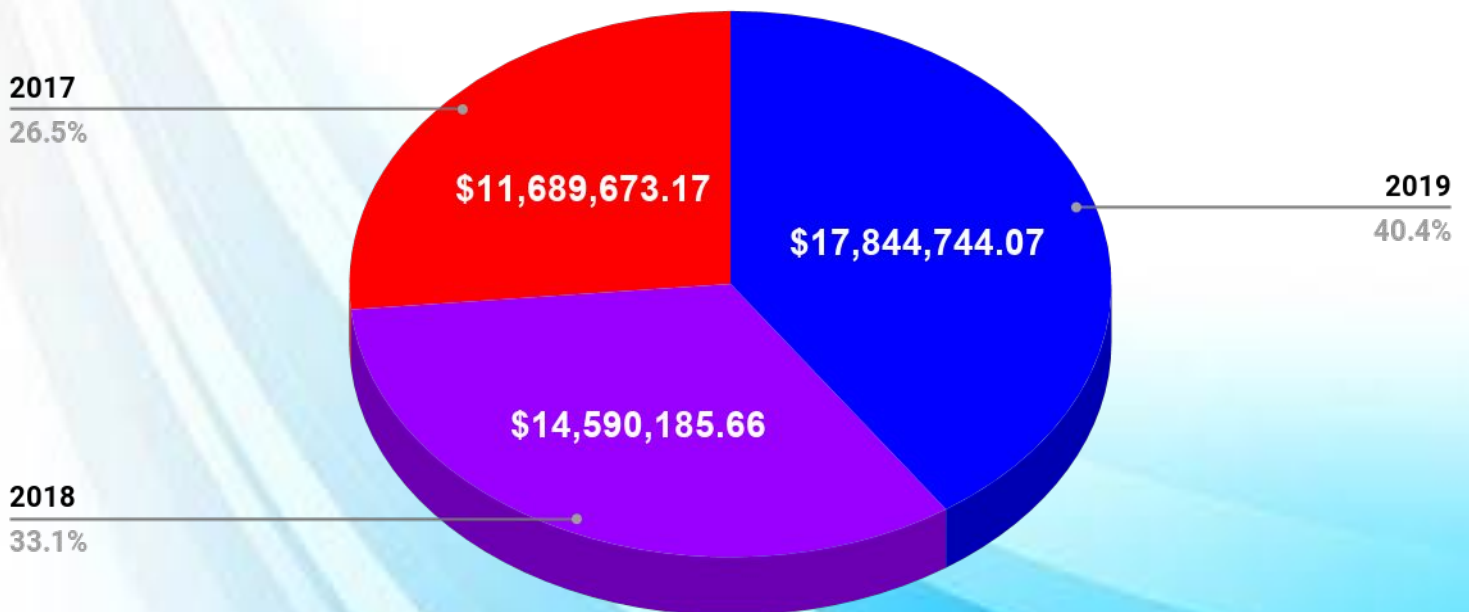


As show on **Table 1.3**, Medical Referral Services Fiscal Year 2017–FY 2019 Breakdown by Count and Expenses Statics. Shows an increase in Funding due to the numbers of medical referral patients, longer length of stay for treatment, sub-assistance allowance, high cost in airfare and increase hotel accommodation expenses, plus medical expense not including personnel and operations expenses.

FY BREAKDOWN BY COUNT AND EXPENSE STATS



Total Expenses



FY 2020 Announcements

Effective October 01, 2019:

- **Utilization Review Nurse** from Grant's Office to maximize the quality and cost efficiency of health care services. Through regular reviews and audits, they ensure that patients receive necessary care without burdening the health care system with unnecessary procedures, ineffective treatments or overlong hospital stays. UR nurses also help insured persons to make informed decisions about their health care by educating them on the benefits and limitations of their Medicare, Medicaid or private health care coverage.
- **(3) MOU staff from each from Tinian & Rota Mayor's Office** to Marianas/Guam Medical Referral Services to assist with transportation and patients appointment coordination.

Effective December 01, 2019:

- **Travel For Treatment (T4T)**, CNMI MRS/Aetna contracted by the CNMI Government is strictly for Medical Referral patients allowing CNMI to save as much as 52%-60% of medical expenses by giving us their rate as a group health plan. They'll be paying for our patients and they get reimbursed by the CNMI Government.

FY 2020 Goals

- Exploring on new facilities with better treatment and rates to save funds.
- Collecting payments from patient with outstanding Promissory Notes to generate revenue towards our account to keep afloat.
- Work closely with the Governor, Legislature and the Secretary of Finance regarding timely payments towards the medical facilities to avoid doors closing on our patients of the Commonwealth.
- Work with the Grant's office to renew the contract of the UR Nurse for the upcoming Fiscal Year.
- For more efficient personnel, MRS seeks to open new FTE's to secure the temporary MOU placements.
- Work with the Legislature on detailing the roles of private health insurance providers making them more responsible to provide update medical abstracts and discharge summaries of their members for continued care upon patients return to the Commonwealth.